



MED⁹EL

ADHEAR System

Stick.Click.Hear

Simple hearing

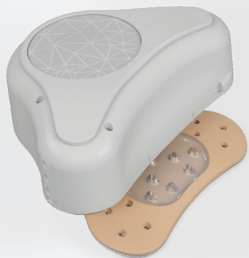
ADHEAR is a revolutionary bone conduction hearing system which offers a world full of sound in an incredibly simple way: Stick.Click.Hear.

ADHEAR is a simple and gentle solution for both adults and children with conductive hearing loss.

Conductive hearing loss occurs when sound cannot reach the inner ear through the ear canal and the middle ear. This can be due to a blockage in the ear canal or a middle ear that does not function properly. Bone conduction occurs naturally, and we've developed sophisticated technologies that can take full advantage of it.







EFFORTLESS

Adhesive, non-surgical solution

Users and parents demonstrate high levels of satisfaction with the device.

NEUMANN et al, 2019⁹

GENTLE

Comfortable with no pressure on skin

- with users preferring this form of hearing system to the traditional softbands.

OSBORNE et al, 2019⁹

RELIABLE

Stays in position, offering consistent access to sound

Average ADHEAR wearing time was 9 hours per day.

OSBORNE et al, 2019⁹

APPEALING

Sits discreetly behind the ear

86% of users reported feeling more confident when wearing the adhesive system as compared with their previous hearing aid devices.

OSBORNE et al, 2019⁹

How it works

ADHEAR uses the principle of bone conduction to help the recipient hear. This means that the hearing system converts sound into vibrations and transfers them to the bone. The bone can conduct vibrations to the inner ear where they are processed as sound.

It's as easy as:

1

STICK
the adhesive adapter on
the skin behind the ear.



2

CLICK
the audio processor on
to the adhesive adapter.



3

HEAR.





Ideal for



SAFETY

ADHEAR's locking battery door prevents small children from swallowing parts.



CONNECTIVITY

ADHEAR is compatible with FM devices often used in the classroom.



Children



FLEXIBILITY

ADHEAR wearing options such as a unilateral or bilateral softband or adhesive allow parents the opportunity to choose what best fits the needs and lifestyle of their child.



MONITORING

The SoundCheck Tool allows caregivers to listen to ADHEAR to ensure it is functioning well.



Discover More

Here with You

For more than 40 years, MED-EL has consistently been the industry's leader in providing the widest range of innovative hearing loss solutions.

We understand that you may have questions as you move forward on your hearing journey. With dedicated care, informative resources and local support, we're here for you every step of the way and welcome you to contact us.

MED-EL

MED-EL Australia and New Zealand

1300 744 782

office@medel.com.au

[medel.com](https://www.medel.com)



- 1 Neumann K, Thomas JP, Voelter C, Dazert S. A new adhesive bone conduction hearing system effectively treats conductive hearing loss in children. *Int J Pediatr Otorhinolaryngol.* 2019;122:117-125.
- 2 Osborne M S, Child-Hymas A, Gill J, Lloyd MS, McDermott AL. First Pediatric Experience With a Novel, Adhesive Adapter Retained, Bone Conduction Hearing Aid System. *Otol Neurotol.* 2019;40(9):1199-1207.